

WS-FTP

FTP - file transfer protocol

Allows you to move your files from one location to another (i.e. moving your files from your local computer to a server to be seen on the world wide web - also known as “uploading”)

You must use WSFTP for the VMS server (also known as axp)

1. Look under START> PROGRAMS> WSFTP> WSFTP LE -- click on the WSFTP LE
2. When WSFTP launches, the first window you will see is the Session Properties (below):

Session Properties [?] [X]

General | Startup | Advanced | Firewall

Profile Name: axp [v] [New]

Host Name/Address: axp.appstate.edu [Delete]

Host Type: Automatic detect [v]

User ID: goodmanjl Anonymous

Password: ***** Save Pwd

Account: []

Comment: []

[OK] [Cancel] [Apply] [Help]

Session Properties [?] [X]

General | Startup | Advanced | Firewall

Initial Remote Site Folder: www

Initial Local Folder: []

Initialize Command: (use ';' to separate multiple commands)

[]

Local file mask: [] Time offset in hours: 0

Remote file mask: []

[OK] [Cancel] [Apply] [Help]

3. To create a NEW profile, click NEW and enter the following information:

> ON THE GENERAL TAB

PROFILE NAME Create a new profile by clicking “new”, name it AXP

HOST NAME/ADDRESS axp.appstate.edu

HOST TYPE Automatic detect

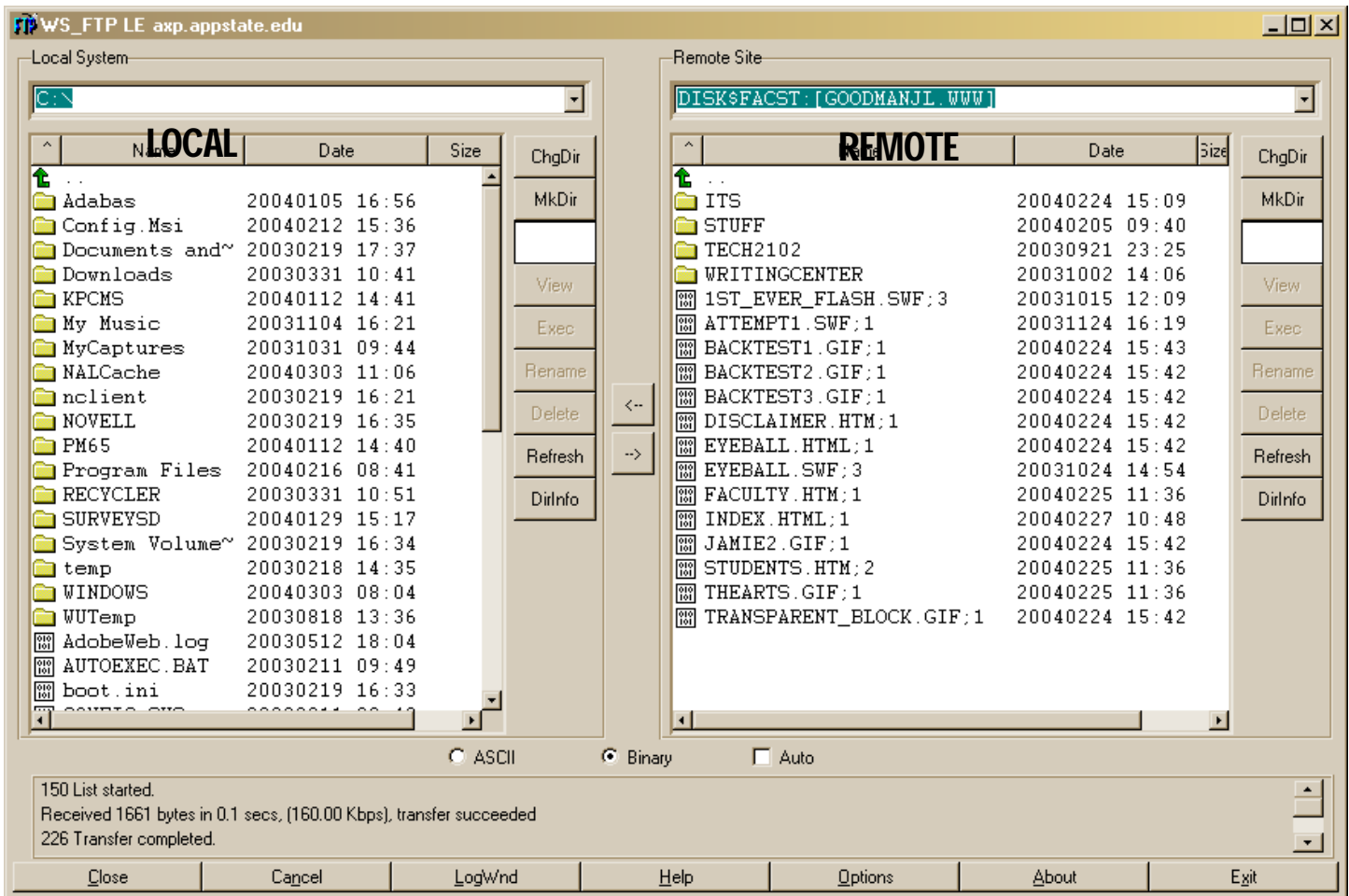
USER ID your university username

PASSWORD your university password

> ON THE STARTUP TAB

INITIAL REMOTE HOST DIRECTORY www

4. To launch your session, click the OK button



FTP displays two panes, one shows local directory (your computer) and the other pane displays the remote directory (server). Use the Arrow keys in the middle of the panes to move files between directories.

TO UPLOAD FILES TO THE SERVER

1. On the LOCAL side, path to (go to) where your files are stored on your computer (for instance c:\My Documents)
2. Set the File type to AUTO ASCII Binary Auto
(ASCII is text only, Binary is for images, pdf files, anything that is NOT text)
3. On the LOCAL side, select the files you want to upload. Click the -> arrow to upload

TO DOWNLOAD FILES TO YOUR COMPUTER FROM THE SERVER

1. On the LOCAL side, path to (go to) where you want to store the files on your computer (for instance c:\My Documents)
2. Set the File type to AUTO ASCII Binary Auto
3. On the REMOTE side, select the files you want to download. Click the <- arrow to download.